

**FLETCHER MACHINE CO.**  
LEXINGTON, N. C.



## **ROTO-BELT**

### **THE REVOLUTIONARY PROFILE SANDING WHEEL FROM FLETCHER**

#### **WORLD CLASS TECHNOLOGY**

The new ROTO-BELT™ from Fletcher combines the ease and simplicity of wheel sanding with the superior performance of belt sanding systems. With ROTO-BELT™ you can change profiles in a matter of minutes by simply changing contoured polymer contact wheels. An elastic sanding belt is placed around the wheel and a quick turn of one hex screw tightens the ratchet mechanism to conform and secure the belt to your profiled wheel.

#### **MADE IN THE UNITED STATES**

Unlike composite wheel sanders, the diameter and shape of the ROTO-BELT™ wheel does not change. When the sanding media wears out, just replace it. This ensures consistently superior performance for any given profile run. ROTO-BELT™ is more aggressive than plastic sanding wheels, handling tougher applications like hardwoods and end grains. Field tested to deliver 6 to 8 times the belt life of other wheels at 1/3 the cost, ROTO-BELT™ is performance made economical.



**Dealer Inquiries Welcome**

**Fletcher Machine Co.**  
4305 East U.S. Highway 64 • Lexington, North Carolina 27292  
Phone: (336) 249-6101 • Toll Free: 1-800-438-1054 • Fax: (336) 249-6890  
[www.fletcher-machine.com](http://www.fletcher-machine.com)

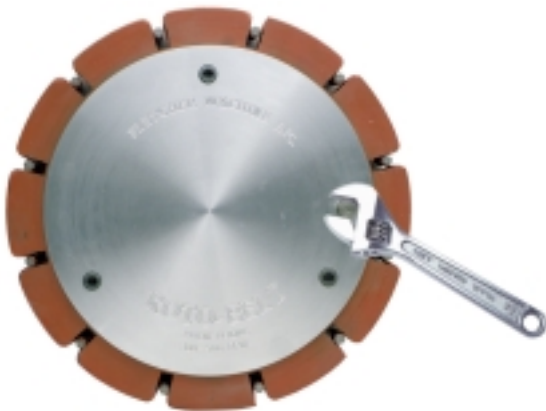
# ROTO-BELT™

**SUPERIOR SANDING  
FAST SET-UP  
EASY PROFILE CHANGING  
PLUS ECONOMICAL**



Wheel sanding gives you ease and simplicity,  
Belt sanding gives you quality performance,

## ROTO-BELT™ GIVES YOU BOTH.



### TECHNICAL DATA:

Outside Wheel Diameter	11 inches
Spindle Hole Diameter	1 1/4 inches
Minimum Horsepower	2 HP
Maximum Speed	500 rpm
Belt Sizes Accepted	1 1/2" x 11" & 2" x 11"

**CALL OR FAX TODAY FOR DETAILS**

**FM**

**Fletcher Machine Co.**

4305 East U.S. Highway 64 • Lexington, North Carolina 27292  
Phone: (336) 249-6101 • Toll Free: 1-800-438-1054 • Fax: (336) 249-6890  
[www.fletcher-machine.com](http://www.fletcher-machine.com)